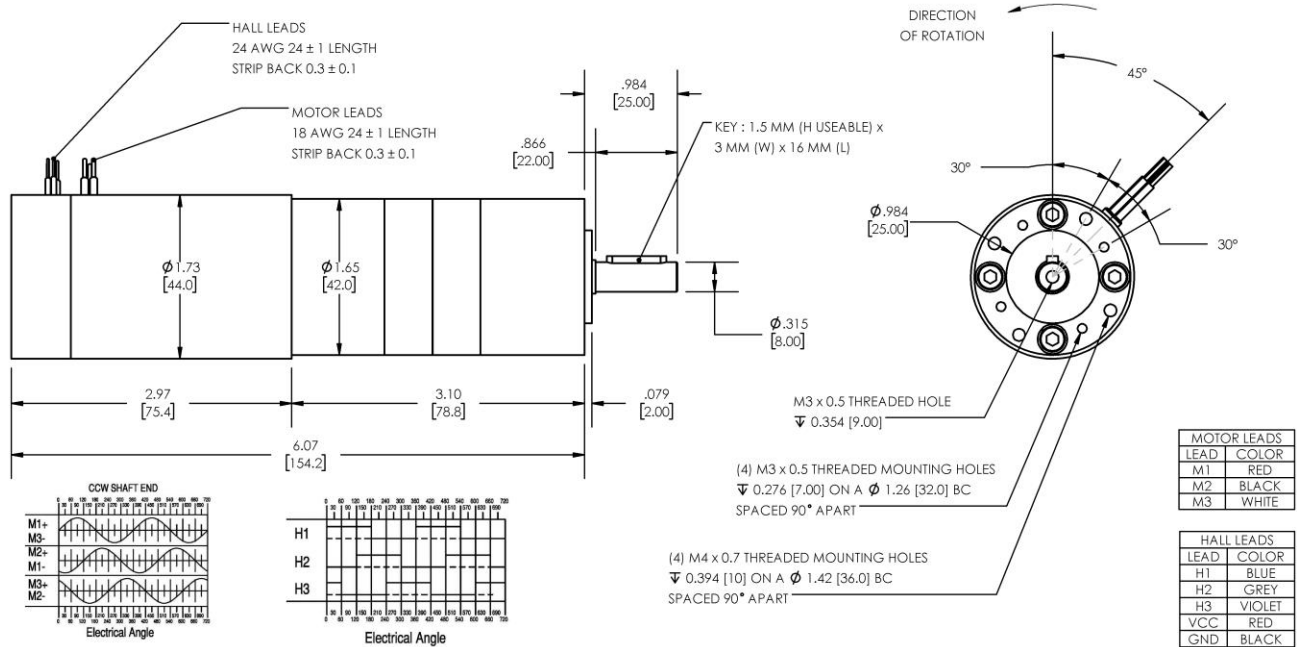


**Model Number:**

## MMP BL44-297G-48V GP42-046



DIMENSIONS ARE INCHES [MM] UNLESS OTHERWISE STATED

PLANETARY GEARMOTOR OUTPUT PARAMETERS:	VALUE	UNITS	TOLERANCE
Gearhead Ratio (exact)	45.56 : 1		
Gearhead Shaft Output Speed (at full-load)	63	RPM	MAX
Gearmotor Rated Continuous Torque	43	In-Lbs	MAX
Gearmotor Rated Peak Torque	<b>133++</b>	In-Lbs	----
Gearhead Standard Backlash	57	Arc Minutes	MAX
Gearhead Efficiency	75%	----	----
Output Shaft Radial Load Capacity	52	Lbs	MAX
Output Shaft Axial Load Capacity	18	Lbs	MAX
Gearmotor Total Weight	1.9	Lbs	MAX

**++ All Peak Torque values are dependent upon duty. Contact our sales office for details.**

DC MOTOR PERFORMANCE PARAMETERS:	VALUE	UNITS	TOLERANCE
Rated DC Voltage	48	DC VOLTS	----
Rated Continuous Current	1.2	AMPERES	----
No-Load Speed	3515	RPM	+/- 15%
Rated Speed	2883	RPM	+/- 15%
Rated Continuous Power Out	43	WATTS	+/- 15%
Rated Continuous Torque	20	OZ-IN	----
Peak Torque (motor only)	75	OZ-IN	----
No-Load Current	0.07	AMPERES	10%
Back EMF Constant (Ke)	13.5	V/KRPM	+/- 10%
Torque Constant (Kt)	18.3	OZ-IN/AMP	+/- 10%
DC Armature Resistance	7.80	OHMS	+/- 15%
Armature Inductance	6.48	mH	+/- 15%
Armature temperature	155	DEG. C	MAX

**NOTES:**

- ENCODER & BRAKE OPTIONS AVAILABLE – [FOLLOW THIS LINK FOR DETAILS](#)
- NEMA MOUNTING FLANGE OPTION AVAILABLE – [FOLLOW THIS LINK FOR DETAILS](#)

# MIDWEST MOTION PRODUCTS, INC

DESIGN, MANUFACTURING & DISTRIBUTION - MOTION CONTROL EQUIPMENT

[www.midwestmotion.com](http://www.midwestmotion.com)

email: [sales@midwestmotion.com](mailto:sales@midwestmotion.com)